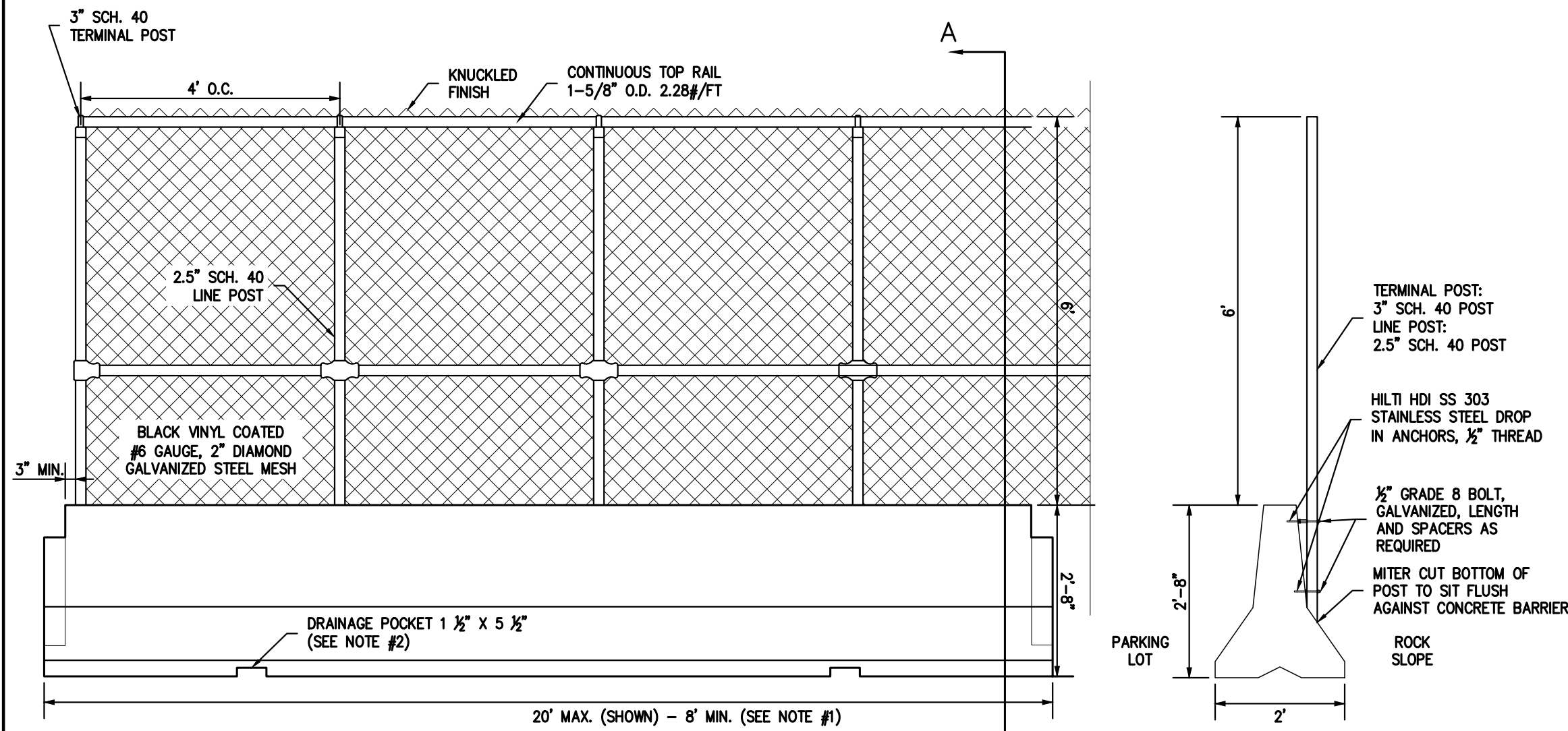


METHOD OF DEPRESSING CURB AT DRIVEWAYS

FLUSH CONCRETE CURB OPENING ALONG DRIVEWAY

54



APPROVED by Planning Board Resolution No. 10-17, dated 03/17/2020.

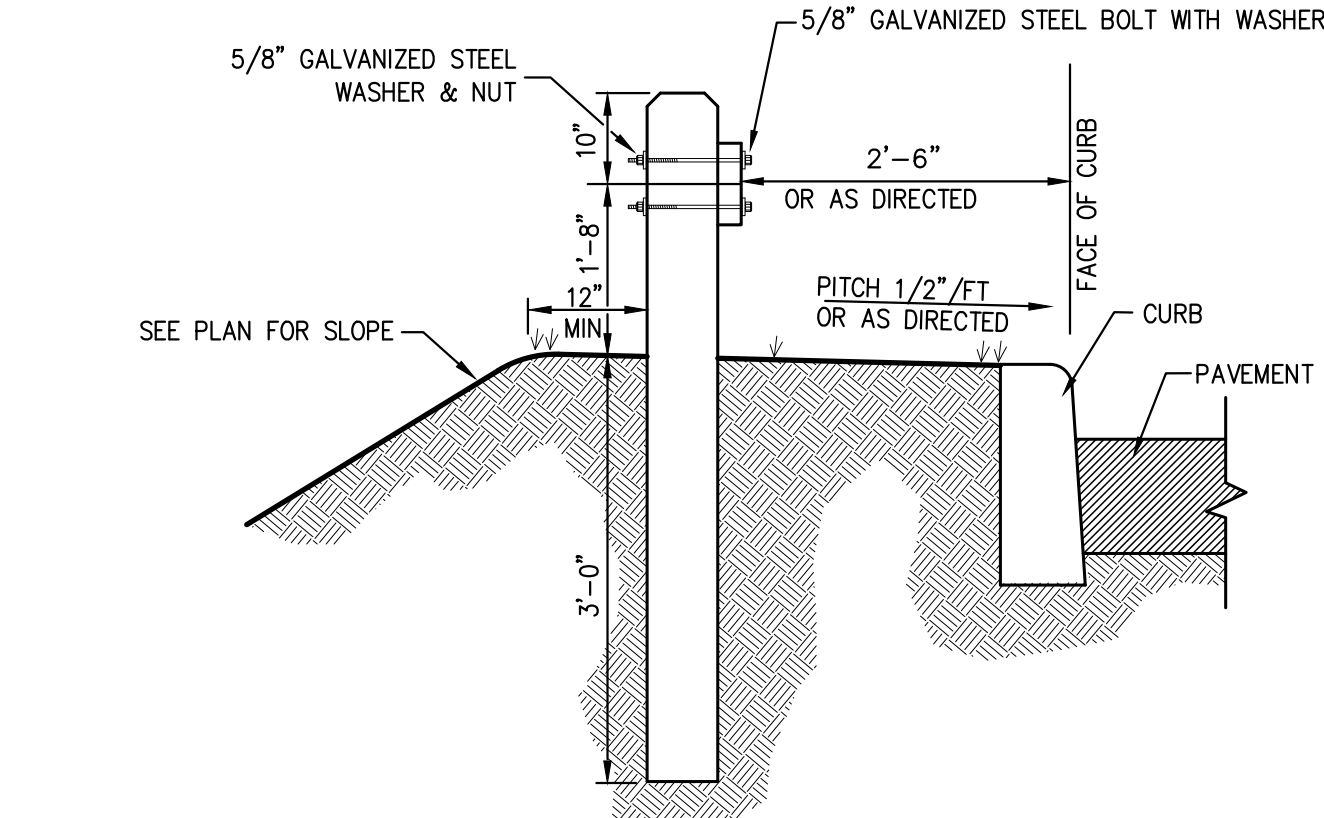
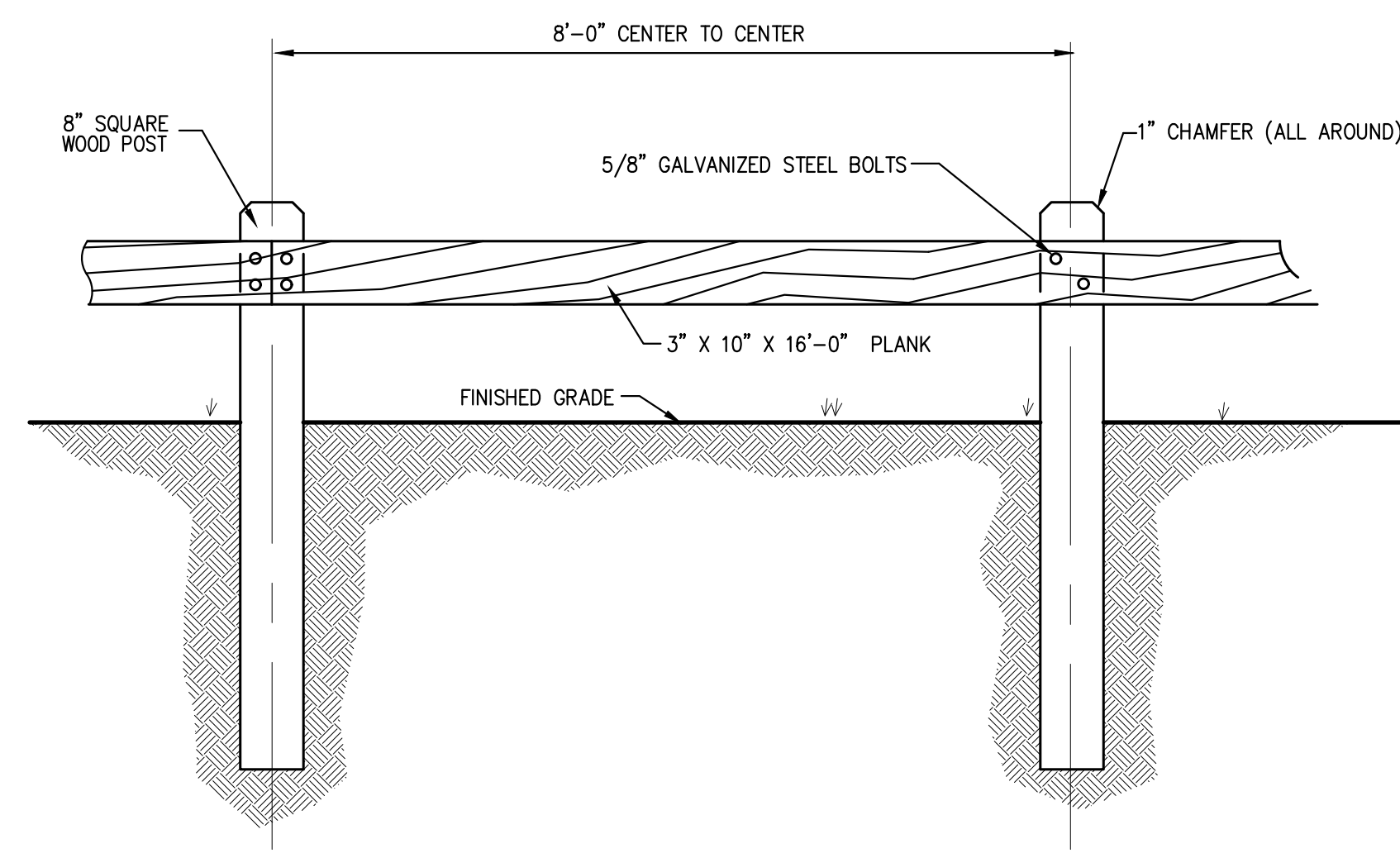
Owner
CELEBRITY WESTCHESTER REALTY, LLC
5 ANDERSON LANE
GOLDENS BRIDGE, NY 10526

Planning Board Chair
JANET ANDERSEN
79 BOUTON ROAD
SOUTH SALEM, NY 10590

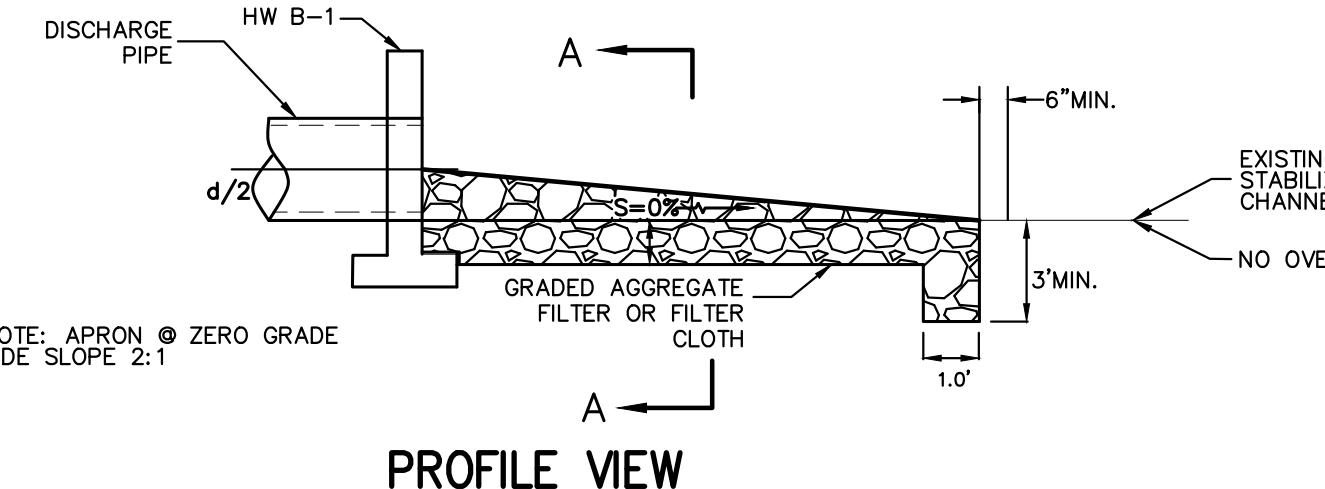
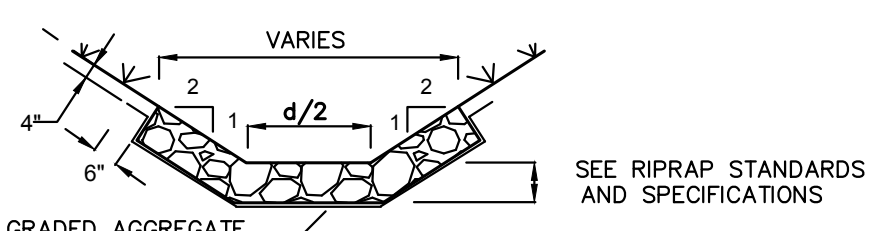
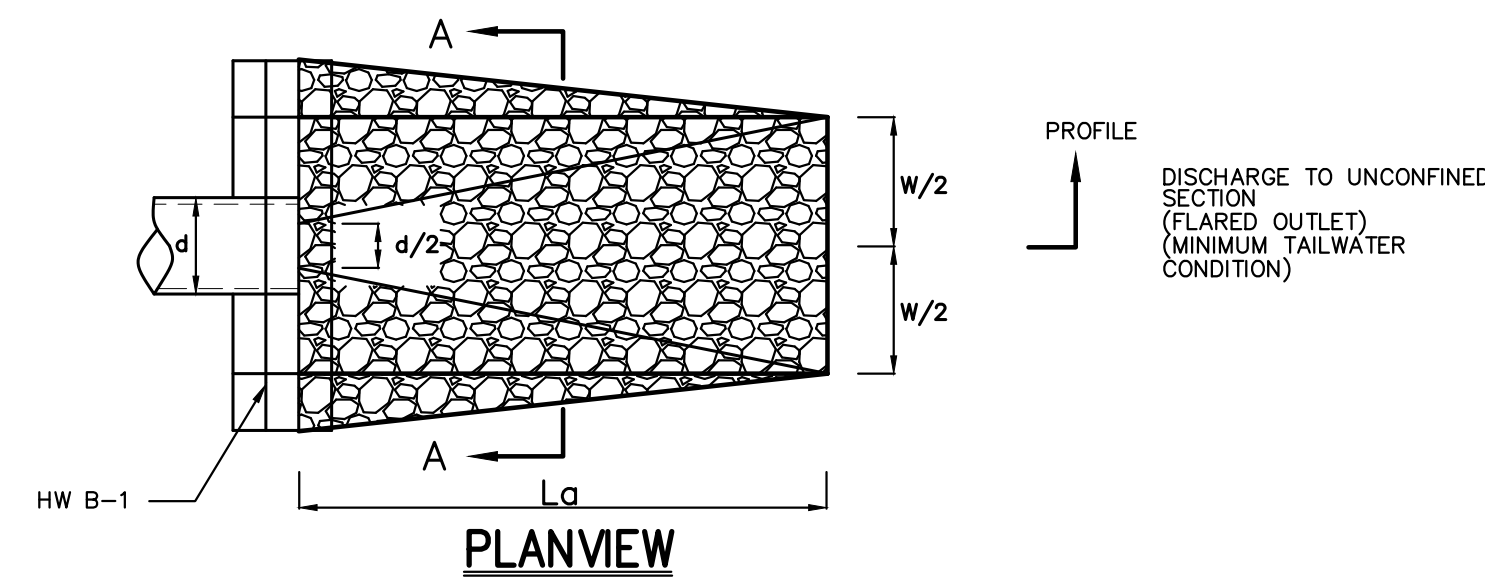
Planning Administrator
CIORS DAN CONRAN
79 BOUTON ROAD
SOUTH SALEM, NY 10590

Town Engineer's Certification
JOSEPH CERMELE, P.E.
KSCI CONSULTING
TOWN CONSULTING ENGINEER

Reviewed for compliance with the Planning Board Resolution No. 10-17 dated 03/17/2020.



- NOTES:
1. ALL WOOD TO BE SEASONED NO.1 DOUGLAS FIR, SOUTHERN PINE OR OTHER APPROVED STRUCTURAL LUMBER.
 2. GALVANIZED BOLT AND NUT TO BE 4000Q MIN. 5400Q MAX. TENSILE STRENGTH. AFTER GALVANIZING BOLT AND NUT, THE NUT SHALL BE FREE RUNNING ON THE BOLT.

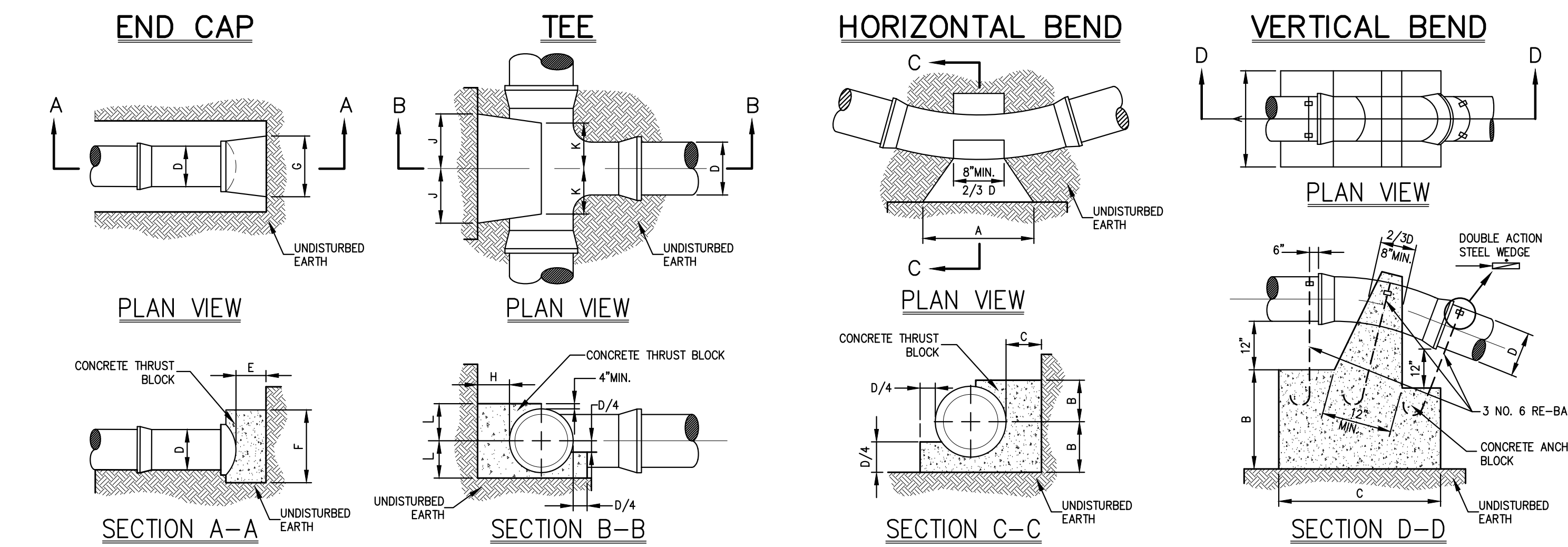


RIP-RAP DISSIPATOR	CAPACITY Q cfs	La ft	d inches	W ft	d50 inches
HW B-1 Outlet	2.50	12	24	14	5

NOTE:
SEE RIPRAP STANDARDS
AND SPECIFICATIONS
MINIMUM TAILWATER
CONDITIONS

HEAVY DUTY CHAIN LINK FENCE ON CONCRETE BARRIER ALONG ROCK SLOPE

55



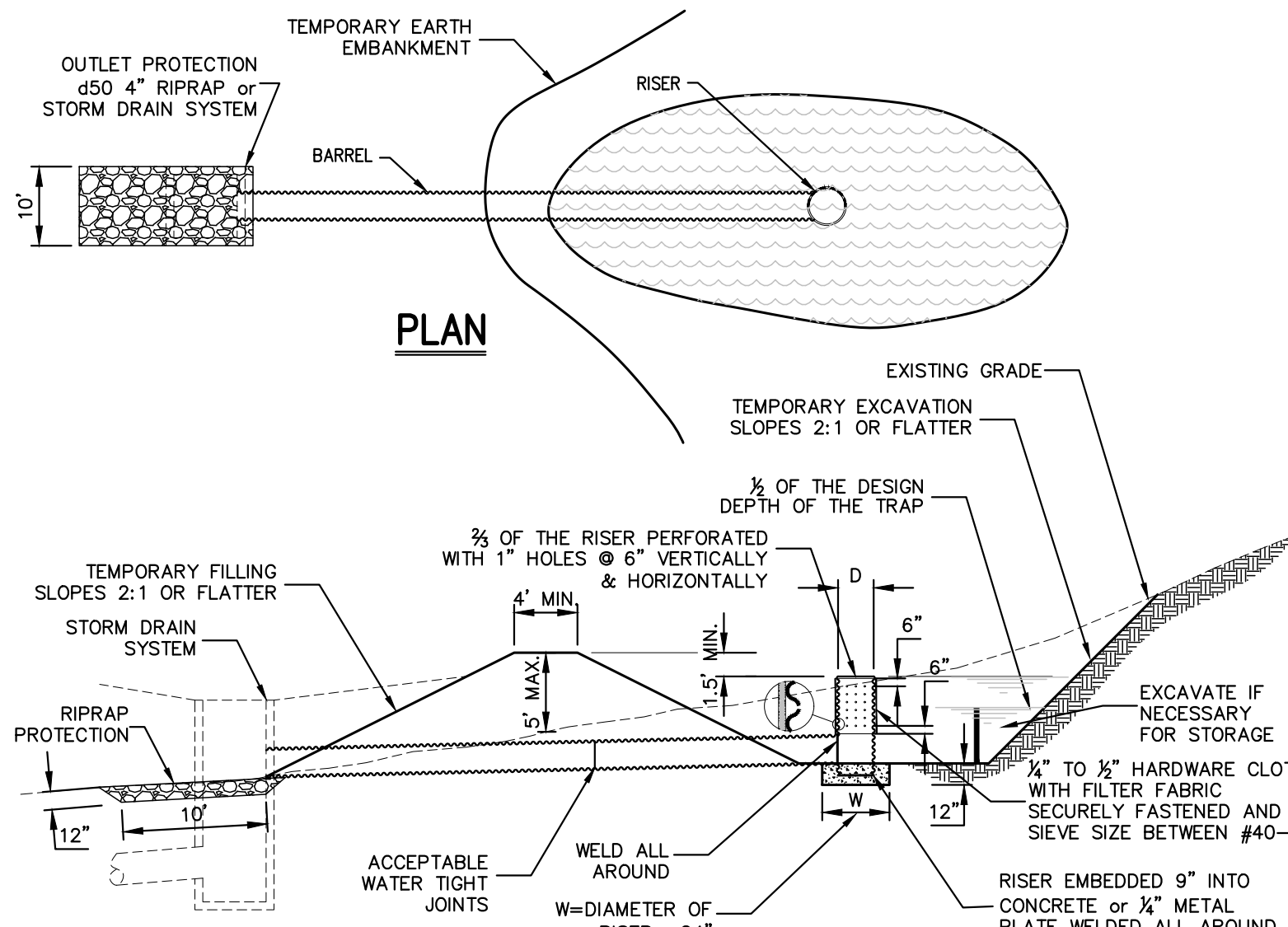
END CAP CHART						TEE CHART						HORIZONTAL BEND CHART						VERTICAL BEND CHART									
D	4"	6"	8"	10"	12"	D	4"	6"	8"	10"	12"	DIAMETER (D)						DIAMETER (D)									
E	6"	6"	8"	8"	10"	H	6"	7"	9"	10"	12"	1/32 (142)	A	1'-6"	1'-6"	2'-0"	2'-6"	3'-0"	3'-6"	1/32 (142)	A	1'-6"	1'-6"	2'-0"	2'-6"	3'-0"	3'-6"
F	12"	12"	1'-4"	1'-8"	2'-0"	L	8"	8"	10"	10"	12"	1/16 (28)	B	1'-3"	1'-3"	1'-9"	1'-3"	2'-0"	2'-0"	1/16 (28)	B	1'-9"	1'-9"	2'-5"	2'-6"	2'-6"	2'-6"
G	1'-6"	1'-5"	2'-0"	2'-5"	3'-0"	J	7"	7"	9"	12"	1'-2"	1/8 (40)	C	2'-0"	2'-0"	2'-6"	3'-8"	4'-0"	4'-4"	1/8 (40)	C	2'-6"	2'-6"	3'-0"	4'-0"	5'-6"	5'-6"
NOTES:						1. ALL CONCRETE TO BE CLASS A (4,000 PSI).						1/4 (40)						1/4 (40)									
2. ALL DIMENSIONS ARE MINIMUMS. ALL ANCHOR AND THRUST BLOCKS SHALL BEAD ON UNBENDED EDGE.						2. FOR JOISTS, BEARING AREA SHALL BE PERPENDICULAR TO THE EDGE OF THE FITTING AT THE FITTING JOINT.						1/4 (40)						1/4 (40)									
3. IN ALL CASES, SHOW, MEASUREMENT "D" REFERS TO THE INSIDE OF THE FITTING.						3. FOR REDUCERS, BEARING AREA SHALL BE PERPENDICULAR TO THE FITTING AXIS, AS SHOWN ON THE FITTING. THE MINIMUM RESTRAINED LENGTH, MEASURED FROM THE CENTER OF THE FITTING, AS SHOWN ON THE FITTING, SHALL BE RESTRAINED, AND SHALL WITHSTAND THE MAXIMUM TENSILE STRESS APPLIED TO THE FITTING.						1/4 (40)						1/4 (40)									
4. ANCHOR AND THRUST BLOCK DIMENSIONS SHOWN ARE MINIMUM FOR 100 PSI WATER PRESSURE AND SOIL RESISTANCE OF 2 KIPS PER SQ FT. CONTRACTOR SHALL ADJUST FOR OTHER CONDITIONS AND SUBMIT FOR APPROVAL.						4. THE ONCE OF THE WATER SYSTEM, EACH JOINT THAT FALLS WITHIN THE MINIMUM RESTRAINED LENGTH, MEASURED FROM THE CENTER OF THE FITTING, AS SHOWN ON THE FITTING, SHALL BE RESTRAINED, AND SHALL WITHSTAND THE MAXIMUM TENSILE STRESS APPLIED TO THE FITTING.						1/4 (40)						1/4 (40)									
5. CONTRACTOR SHALL ADJUST FOR OTHER CONDITIONS AND SUBMIT FOR APPROVAL.						5. CONTRACTOR SHALL ADJUST FOR OTHER CONDITIONS AND SUBMIT FOR APPROVAL.						1/4 (40)						1/4 (40)									
6. FOR JOISTS, BEARING AREA SHALL BE PERPENDICULAR TO THE EDGE OF THE FITTING AT THE FITTING JOINT.						6. FOR REDUCERS, BEARING AREA SHALL BE PERPENDICULAR TO THE FITTING AXIS, AS SHOWN ON THE FITTING. THE MINIMUM RESTRAINED LENGTH, MEASURED FROM THE CENTER OF THE FITTING, AS SHOWN ON THE FITTING, SHALL BE RESTRAINED, AND SHALL WITHSTAND THE MAXIMUM TENSILE STRESS APPLIED TO THE FITTING.						1/4 (40)						1/4 (40)									
7. THE ONCE OF THE WATER SYSTEM, EACH JOINT THAT FALLS WITHIN THE MINIMUM RESTRAINED LENGTH, MEASURED FROM THE CENTER OF THE FITTING, AS SHOWN ON THE FITTING, SHALL BE RESTRAINED, AND SHALL WITHSTAND THE MAXIMUM TENSILE STRESS APPLIED TO THE FITTING.						7. THE ONCE OF THE WATER SYSTEM, EACH JOINT THAT FALLS WITHIN THE MINIMUM RESTRAINED LENGTH, MEASURED FROM THE CENTER OF THE FITTING, AS SHOWN ON THE FITTING, SHALL BE RESTRAINED, AND SHALL WITHSTAND THE MAXIMUM TENSILE STRESS APPLIED TO THE FITTING.						1/4 (40)						1/4 (40)									
8. CONTRACTOR SHALL ADJUST FOR OTHER CONDITIONS AND SUBMIT FOR APPROVAL.						8. CONTRACTOR SHALL ADJUST FOR OTHER CONDITIONS AND SUBMIT FOR APPROVAL.						1/4 (40)						1/4 (40)									
9. THE ONCE OF THE WATER SYSTEM, EACH JOINT THAT FALLS WITHIN THE MINIMUM RESTRAINED LENGTH, MEASURED FROM THE CENTER OF THE FITTING, AS SHOWN ON THE FITTING, SHALL BE RESTRAINED, AND SHALL WITHSTAND THE MAXIMUM TENSILE STRESS APPLIED TO THE FITTING.						9. THE ONCE OF THE WATER SYSTEM, EACH JOINT THAT FALLS WITHIN THE MINIMUM RESTRAINED LENGTH, MEASURED FROM THE CENTER OF THE FITTING, AS SHOWN ON THE FITTING, SHALL BE RESTRAINED, AND SHALL WITHSTAND THE MAXIMUM TENSILE STRESS APPLIED TO THE FITTING.						1/4 (40)						1/4 (40)									
10. CONTRACTOR SHALL ADJUST FOR OTHER CONDITIONS AND SUBMIT FOR APPROVAL.						10. CONTRACTOR SHALL ADJUST FOR OTHER CONDITIONS AND SUBMIT FOR APPROVAL.						1/4 (40)						1/4 (40)									
11. THE ONCE OF THE WATER SYSTEM, EACH JOINT THAT FALLS WITHIN THE MINIMUM RESTRAINED LENGTH, MEASURED FROM THE CENTER OF THE FITTING, AS SHOWN ON THE FITTING, SHALL BE RESTRAINED, AND SHALL WITHSTAND THE MAXIMUM TENSILE STRESS APPLIED TO THE FITTING.						11. THE ONCE OF THE WATER SYSTEM, EACH JOINT THAT FALLS WITHIN THE MINIMUM RESTRAINED LENGTH, MEASURED FROM THE CENTER OF THE FITTING, AS SHOWN ON THE FITTING, SHALL BE RESTRAINED, AND SHALL WITHSTAND THE MAXIMUM TENSILE STRESS APPLIED TO THE FITTING.						1/4 (40)						1/4 (40)									
12. CONTRACTOR SHALL ADJUST FOR OTHER CONDITIONS AND SUBMIT FOR APPROVAL.						12. CONTRACTOR SHALL ADJUST FOR OTHER CONDITIONS AND SUBMIT FOR APPROVAL.						1/4 (40)						1/4 (40)									
13. THE ONCE OF THE WATER SYSTEM, EACH JOINT THAT FALLS WITHIN THE MINIMUM RESTRAINED LENGTH, MEASURED FROM THE CENTER OF THE FITTING, AS SHOWN ON THE FITTING, SHALL BE RESTRAINED, AND SHALL WITHSTAND THE MAXIMUM TENSILE STRESS APPLIED TO THE FITTING.						13. THE ONCE OF THE WATER SYSTEM, EACH JOINT THAT FALLS WITHIN THE MINIMUM RESTRAINED LENGTH, MEASURED FROM THE CENTER OF THE FITTING, AS SHOWN ON THE FITTING, SHALL BE RESTRAINED, AND SHALL WITHSTAND THE MAXIMUM TENSILE STRESS APPLIED TO THE FITTING.						1/4 (40)						1/4 (40)									
14. CONTRACTOR SHALL ADJUST FOR OTHER CONDITIONS AND SUBMIT FOR APPROVAL.						14. CONTRACTOR SHALL ADJUST FOR OTHER CONDITIONS AND SUBMIT FOR APPROVAL.						1/4 (40)						1/4 (40)									
15. THE ONCE OF THE WATER SYSTEM, EACH JOINT THAT FALLS WITHIN THE MINIMUM RESTRAINED LENGTH, MEASURED FROM THE CENTER OF THE FITTING, AS SHOWN ON THE FITTING, SHALL BE RESTRAINED, AND SHALL WITHSTAND THE MAXIMUM TENSILE STRESS APPLIED TO THE FITTING.						15. THE ONCE OF THE WATER SYSTEM, EACH JOINT THAT FALLS WITHIN THE MINIMUM RESTRAINED LENGTH, MEASURED FROM THE CENTER OF THE FITTING, AS SHOWN ON THE FITTING, SHALL BE RESTRAINED, AND SHALL WITHSTAND THE MAXIMUM TENSILE STRESS APPLIED TO THE FITTING.						1/4 (40)						1/4 (40)									
16. CONTRACTOR SHALL ADJUST FOR OTHER CONDITIONS AND SUBMIT FOR APPROVAL.						16. CONTRACTOR SHALL ADJUST FOR OTHER CONDITIONS AND SUBMIT FOR APPROVAL.						1/4 (40)						1/4 (40)									
17. THE ONCE OF THE WATER SYSTEM, EACH JOINT THAT FALLS WITHIN THE MINIMUM RESTRAINED LENGTH, MEASURED FROM THE CENTER OF THE FITTING, AS SHOWN ON THE FITTING, SHALL BE RESTRAINED, AND SHALL WITHSTAND THE MAXIMUM TENSILE STRESS APPLIED TO THE FITTING.						17. THE ONCE OF THE WATER SYSTEM, EACH JOINT THAT FALLS WITHIN THE MINIMUM RESTRAINED LENGTH, MEASURED FROM THE CENTER OF THE FITTING, AS SHOWN ON THE FITTING, SHALL BE RESTRAINED, AND SHALL WITHSTAND THE MAXIMUM TENSILE STRESS APPLIED TO THE FITTING.						1/4 (40)						1/4 (40)									
18. CONTRACTOR SHALL ADJUST FOR OTHER CONDITIONS AND SUBMIT FOR APPROVAL.						18. CONTRACTOR SHALL ADJUST FOR OTHER CONDITIONS AND SUBMIT FOR APPROVAL.						1/4 (40)						1/4 (40)									
19. THE ONCE OF THE WATER SYSTEM, EACH JOINT THAT FALLS WITHIN THE MINIMUM RESTRAINED LENGTH, MEASURED FROM THE CENTER OF THE FITTING, AS SHOWN ON THE FITTING, SHALL BE RESTRAINED, AND SHALL WITHSTAND THE MAXIMUM TENSILE STRESS APPLIED TO THE FITTING.						19. THE ONCE OF THE WATER SYSTEM, EACH JOINT THAT FALLS WITHIN THE MINIMUM RESTRAINED LENGTH, MEASURED FROM THE CENTER OF THE FITTING, AS SHOWN ON THE FITTING, SHALL BE RESTRAINED, AND SHALL WITHSTAND THE MAXIMUM TENSILE STRESS APPLIED TO THE FITTING.						1/4 (40)						1/4 (40)									
20. CONTRACTOR SHALL ADJUST FOR OTHER CONDITIONS AND SUBMIT FOR APPROVAL.						20. CONTRACTOR SHALL ADJUST FOR OTHER CONDITIONS AND SUBMIT FOR APPROVAL.						1/4 (40)						1/4 (40)									
21. THE ONCE OF THE WATER SYSTEM, EACH JOINT THAT FALLS WITHIN THE MINIMUM RESTRAINED LENGTH, MEASURED FROM THE CENTER OF THE FITTING, AS SHOWN ON THE FITTING, SHALL BE RESTRAINED, AND SHALL WITHSTAND THE MAXIMUM TENSILE STRESS APPLIED TO THE FITTING.						21. THE ONCE OF THE WATER SYSTEM, EACH JOINT THAT FALLS WITHIN THE MINIMUM RESTRAINED LENGTH, MEASURED FROM THE CENTER OF THE FITTING, AS SHOWN ON THE FITTING, SHALL BE RESTRAINED, AND SHALL WITHSTAND THE MAXIMUM TENSILE STRESS APPLIED TO THE FITTING.						1/4 (40)						1/4 (40)									
22. CONTRACTOR SHALL ADJUST FOR OTHER CONDITIONS AND SUBMIT FOR APPROVAL.						22. CONTRACTOR SHALL ADJUST FOR OTHER CONDITIONS AND SUBMIT FOR APPROVAL.						1/4 (40)						1/4 (40)									
23. THE ONCE OF THE WATER SYSTEM, EACH JOINT THAT FALLS WITHIN THE MINIMUM RESTRAINED LENGTH, MEASURED FROM THE CENTER OF THE FITTING, AS SHOWN ON THE FITTING, SHALL BE RESTRAINED, AND SHALL WITHSTAND THE MAXIMUM TENSILE STRESS APPLIED TO THE FITTING.						23. THE ONCE OF THE WATER SYSTEM, EACH JOINT THAT FALLS WITHIN THE MINIMUM RESTRAINED LENGTH, MEASURED FROM THE CENTER OF THE FITTING, AS SHOWN ON THE FITTING, SHALL BE RESTRAINED, AND SHALL WITHSTAND THE MAXIMUM TENSILE STRESS APPLIED TO THE FITTING.						1/4 (40)						1/4 (40)									
24. CONTRACTOR SHALL ADJUST FOR OTHER CONDITIONS AND SUBMIT FOR APPROVAL.						24. CONTRACTOR SHALL ADJUST FOR OTHER CONDITIONS AND SUBMIT FOR APPROVAL.						1/4 (40)						1/4 (40)									
25. THE ONCE OF THE WATER SYSTEM, EACH JOINT THAT FALLS WITHIN THE MINIMUM RESTRAINED LENGTH, MEASURED FROM THE CENTER OF THE FITTING, AS SHOWN ON THE FITTING, SHALL BE RESTRAINED, AND SHALL WITHSTAND THE MAXIMUM TENSILE STRESS APPLIED TO THE FITTING.						25. THE ONCE OF THE WATER SYSTEM, EACH JOINT THAT FALLS WITHIN THE MINIMUM RESTRAINED LENGTH, MEASURED FROM THE CENTER OF THE FITTING, AS SHOWN ON THE FITTING, SHALL BE RESTRAINED, AND SHALL WITHSTAND THE MAXIMUM TENSILE STRESS APPLIED TO THE FITTING.						1/4 (40)						1/4 (40)									
26. CONTRACTOR SHALL ADJUST FOR OTHER CONDITIONS AND SUBMIT FOR APPROVAL.						26. CONTRACTOR SHALL ADJUST FOR OTHER CONDITIONS AND SUBMIT FOR APPROVAL.						1/4 (40)						1/4 (40)									
27. THE ONCE OF THE WATER SYSTEM, EACH JOINT THAT FALLS WITHIN THE MINIMUM RESTRAINED LENGTH, MEASURED FROM THE CENTER OF THE FITTING, AS SHOWN ON THE FITTING, SHALL BE RESTRAINED, AND SHALL WITHSTAND THE MAXIMUM TENSILE STRESS APPLIED TO THE FITTING.						27. THE ONCE OF THE WATER SYSTEM, EACH JOINT THAT FALLS WITHIN THE MINIMUM RESTRAINED LENGTH, MEASURED FROM THE CENTER OF THE FITTING, AS SHOWN ON THE FITTING, SHALL BE RESTRAINED, AND SHALL WITHSTAND THE MAXIMUM TENSILE STRESS APPLIED TO THE FITTING.						1/4 (40)						1/4 (40)									
28. CONTRACTOR SHALL ADJUST FOR OTHER CONDITIONS AND SUBMIT FOR APPROVAL.						28. CONTRACTOR SHALL ADJUST FOR OTHER CONDITIONS AND SUBMIT FOR APPROVAL.						1/4 (40)						1/4 (40)									
29. THE ONCE OF THE WATER SYSTEM, EACH JOINT THAT FALLS WITHIN THE MINIMUM RESTRAINED LENGTH, MEASURED FROM THE CENTER OF THE FITTING, AS SHOWN ON THE FITTING, SHALL BE RESTRAINED, AND SHALL WITHSTAND THE MAXIMUM TENSILE STRESS APPLIED TO THE FITTING.						29. THE ONCE OF THE WATER SYSTEM, EACH JOINT THAT FALLS WITHIN THE MINIMUM RESTRAINED LENGTH, MEASURED FROM THE CENTER OF THE FITTING, AS SHOWN ON THE FITTING, SHALL BE RESTRAINED, AND SHALL WITHSTAND THE MAXIMUM TENSILE STRESS APPLIED TO THE FITTING.						1/4 (40)						1/4 (40)									
30. CONTRACTOR SHALL ADJUST FOR OTHER CONDITIONS AND SUBMIT FOR APPROVAL.						30. CONTRACTOR SHALL ADJUST FOR OTHER CONDITIONS AND SUBMIT FOR APPROVAL.						1/4 (40)						1/4 (40)									
31. THE ONCE OF THE WATER SYSTEM, EACH JOINT THAT FALLS WITHIN THE MINIMUM RESTRAINED LENGTH, MEASURED FROM THE CENTER OF THE FITTING, AS SHOWN ON THE FITTING, SHALL BE RESTRAINED, AND SHALL WITHSTAND THE MAXIMUM TENSILE STRESS APPLIED TO THE FITTING.						31. THE ONCE OF THE WATER SYSTEM, EACH JOINT THAT FALLS WITHIN THE MINIMUM RESTRAINED LENGTH, MEASURED FROM THE CENTER OF THE FITTING, AS SHOWN ON THE FITTING, SHALL BE RESTRAINED, AND SHALL WITHSTAND THE MAXIMUM TENSILE STRESS APPLIED TO THE FITTING.						1/4 (40)						1/4 (40)									
32. CONTRACTOR SHALL ADJUST FOR OTHER CONDITIONS AND SUBMIT FOR APPROVAL.						32. CONTRACTOR SHALL ADJUST FOR OTHER CONDITIONS AND SUBMIT FOR APPROVAL.						1/4 (40)						1/4 (40)									
33. THE ONCE OF THE WATER SYSTEM, EACH JOINT THAT FALLS WITHIN THE MINIMUM RESTRAINED LENGTH, MEASURED FROM THE CENTER OF THE FITTING, AS SHOWN ON THE FITTING, SHALL BE RESTRAINED, AND SHALL WITHSTAND THE MAXIMUM TENSILE STRESS APPLIED TO THE FITTING.						33. THE ONCE OF THE WATER SYSTEM, EACH JOINT THAT FALLS WITHIN THE MINIMUM RESTRAINED LENGTH, MEASURED FROM THE CENTER OF THE FITTING, AS SHOWN ON THE FITTING, SHALL BE RESTRAINED, AND SHALL WITHSTAND THE MAXIMUM TENSILE STRESS APPLIED TO THE FITTING.						1/4 (40)						1/4 (40)									
34. CONTRACTOR SHALL ADJUST FOR OTHER CONDITIONS AND SUBMIT FOR APPROVAL.						34. CONTRACTOR SHALL ADJUST FOR OTHER CONDITIONS AND SUBMIT FOR APPROVAL.						1/4 (40)						1/4 (40)									
35. THE ONCE OF THE WATER SYSTEM, EACH JOINT THAT FALLS WITHIN THE MINIMUM RESTRAINED LENGTH, MEASURED FROM THE CENTER OF THE FITTING, AS SHOWN ON THE FITTING, SHALL BE RESTRAINED, AND SHALL WITHSTAND THE MAXIMUM TENSILE STRESS APPLIED TO THE FITTING.						35. THE ONCE OF THE WATER SYSTEM, EACH JOINT THAT FALLS WITHIN THE MINIMUM RESTRAINED LENGTH, MEASURED FROM THE CENTER OF THE FITTING, AS SHOWN ON THE FITTING, SHALL BE RESTRAINED, AND SHALL WITHSTAND THE MAXIMUM TENSILE STRESS APPLIED TO THE FITTING.						1/4 (40)						1/4 (40)									
36. CONTRACTOR SHALL ADJUST FOR OTHER CONDITIONS AND SUBMIT FOR APPROVAL.						36. CONTRACTOR SHALL ADJUST FOR OTHER CONDITIONS AND SUBMIT FOR APPROVAL.						1/4 (40)						1/4 (40)									
37. THE ONCE OF THE WATER SYSTEM, EACH JOINT THAT FALLS WITHIN THE MINIMUM RESTRAINED LENGTH, MEASURED FROM THE CENTER OF THE FITTING, AS SHOWN ON THE FITTING, SHALL BE RESTRAINED, AND SHALL WITHSTAND THE MAXIMUM TENSILE STRESS APPLIED TO THE FITTING.						37. THE ONCE OF THE WATER SYSTEM, EACH JOINT THAT FALLS WITHIN THE MINIMUM RESTRAINED LENGTH, MEASURED FROM THE CENTER OF THE FITTING, AS SHOWN ON THE FITTING, SHALL BE RESTRAINED, AND SHALL WITHSTAND THE MAXIMUM TENSILE STRESS APPLIED TO THE FITTING.						1/4 (40)						1/4 (40)									
38. CONTRACTOR SHALL ADJUST FOR OTHER CONDITIONS AND SUBMIT FOR APPROVAL.						38. CONTRACTOR SHALL ADJUST FOR OTHER CONDITIONS AND SUBMIT FOR APPROVAL.						1/4 (40)						1/4 (40)									
39. THE ONCE OF THE WATER SYSTEM, EACH JOINT THAT FALLS WITHIN THE MINIMUM RESTRAINED LENGTH, MEASURED FROM THE CENTER OF THE FITTING, AS SHOWN ON THE FITTING, SHALL BE RESTRAINED, AND SHALL WITHSTAND THE MAXIMUM TENSILE STRESS APPLIED TO THE FITTING.						39. THE ONCE OF THE WATER SYSTEM, EACH JOINT THAT FALLS WITHIN THE MINIMUM RESTRAINED LENGTH, MEASURED FROM THE CENTER OF THE FITTING, AS SHOWN ON THE FITTING, SHALL BE RESTRAINED, AND SHALL WITHSTAND THE MAXIMUM TENSILE STRESS APPLIED TO THE FITTING.						1/4 (40)						1/4 (40)									
40. CONTRACTOR SHALL ADJUST FOR OTHER CONDITIONS AND SUBMIT FOR APPROVAL.						40. CONTRACTOR SHALL ADJUST FOR OTHER CONDITIONS AND SUBMIT FOR APPROVAL.						1/4 (40)						1/4 (40)									
41. THE ONCE OF THE WATER SYSTEM, EACH JOINT THAT FALLS WITHIN THE MINIMUM RESTRAINED LENGTH, MEASURED FROM THE CENTER OF THE FITTING, AS SHOWN ON THE FITTING, SHALL BE RESTRAINED, AND SHALL WITHSTAND THE MAXIMUM TENSILE STRESS APPLIED TO THE FITTING.						41. THE ONCE OF THE WATER SYSTEM, EACH JOINT THAT FALLS WITHIN THE MINIMUM RESTRAINED LENGTH, MEASURED FROM THE CENTER OF THE FITTING, AS SHOWN ON THE FITTING, SHALL BE RESTRAINED, AND SHALL WITHSTAND THE MAXIMUM TENSILE STRESS APPLIED TO THE FITTING.						1/4 (40)						1/4 (40)									
42. CONTRACTOR SHALL ADJUST FOR OTHER CONDITIONS AND SUBMIT FOR APPROVAL.						42. CONTRACTOR SHALL ADJUST FOR OTHER CONDITIONS AND SUBMIT FOR APPROVAL.						1/4 (40)						1/4 (40)									
43. THE ONCE OF THE WATER SYSTEM, EACH JOINT THAT FALLS WITHIN THE MINIMUM RESTRAINED LENGTH, MEASURED FROM THE CENTER OF THE FITTING, AS SHOWN ON THE FITTING, SHALL BE RESTRAINED, AND SHALL WITHSTAND THE MAXIMUM TENSILE STRESS APPLIED TO THE FITTING.						43. THE ONCE OF THE WATER SYSTEM, EACH JOINT THAT FALLS WITHIN THE MINIMUM RESTRAINED LENGTH, MEASURED FROM THE CENTER OF THE FITTING, AS SHOWN ON THE FITTING, SHALL BE RESTRAINED, AND SHALL WITHSTAND THE MAXIMUM TENSILE STRESS APPLIED TO THE FITTING.						1/4 (40)						1/4 (40)									
44. CONTRACTOR SHALL ADJUST FOR OTHER CONDITIONS AND SUBMIT FOR APPROVAL.						44. CONTRACTOR SHALL ADJUST FOR OTHER CONDITIONS AND SUBMIT FOR APPROVAL.						1/4 (40)						1/4 (40)									
45. THE ONCE OF THE WATER SYSTEM, EACH JOINT THAT FALLS WITHIN THE MINIMUM RESTRAINED LENGTH, MEASURED FROM THE CENTER OF THE FITTING, AS SHOWN ON THE FITTING, SHALL BE RESTRAINED, AND SHALL WITHSTAND THE MAXIMUM TENSILE STRESS APPLIED TO THE FITTING.						45. THE ONCE OF THE WATER SYSTEM, EACH JOINT THAT FALLS WITHIN THE MINIMUM RESTRAINED LENGTH, MEASURED FROM THE CENTER OF THE FITTING, AS SHOWN ON THE FITTING, SHALL BE RESTRAINED, AND SHALL WITHSTAND THE MAXIMUM TENSILE STRESS APPLIED TO THE FITTING.						1/4 (40)						1/4 (40)									
46. CONTRACTOR SHALL ADJUST FOR OTHER CONDITIONS AND SUBMIT FOR APPROVAL.						46. CONTRACTOR SHALL ADJUST FOR OTHER CONDITIONS AND SUBMIT FOR APPROVAL.						1/4 (40)						1/4 (40)									
47. THE ONCE OF THE WATER SYSTEM, EACH JOINT THAT FALLS WITHIN THE MINIMUM RESTRAINED LENGTH, MEASURED FROM THE CENTER OF THE FITTING, AS SHOWN ON THE FITTING, SHALL BE RESTRAINED, AND SHALL WITHSTAND THE MAXIMUM TENSILE STRESS APPLIED TO THE FITTING.						47. THE ONCE OF THE WATER SYSTEM, EACH JOINT THAT FALLS WITHIN THE MINIMUM RESTRAINED LENGTH, MEASURED FROM THE CENTER OF THE FITTING, AS SHOWN ON THE FITTING, SHALL BE RESTRAINED, AND SHALL WITHSTAND THE MAXIMUM TENSILE STRESS APPLIED TO THE FITTING.						1/4 (40)						1/4 (40)									
48. CONTRACTOR SHALL ADJUST FOR OTHER CONDITIONS AND SUBMIT FOR APPROVAL.						48. CONTRACTOR SHALL ADJUST FOR OTHER CONDITIONS AND SUBMIT FOR APPROVAL.						1/4 (40)						1/4 (40)									
49. THE ONCE OF THE WATER SYSTEM, EACH JOINT THAT FALLS WITHIN THE MINIMUM RESTRAINED LENGTH, MEASURED FROM THE CENTER OF THE FITTING, AS SHOWN ON THE FITTING, SHALL BE RESTRAINED, AND SHALL WITHSTAND THE MAXIMUM TENSILE STRESS APPLIED TO THE FITTING.						49. THE ONCE OF THE WATER SYSTEM, EACH JOINT THAT FALLS WITHIN THE MINIMUM RESTRAINED LENGTH, MEASURED FROM THE CENTER OF THE FITTING, AS SHOWN ON THE FITTING, SHALL BE RESTRAINED, AND SHALL WITHSTAND THE MAXIMUM TENSILE STRESS APPLIED TO THE FITTING.						1/4 (40)						1/4 (40)									
50. CONTRACTOR SHALL ADJUST FOR OTHER CONDITIONS AND SUBMIT FOR APPROVAL.						50. CONTRACTOR SHALL ADJUST FOR OTHER CONDITIONS AND SUBMIT FOR APPROVAL.						1/4 (40)						1/4 (40)									
51. THE ONCE OF THE WATER SYSTEM, EACH JOINT THAT FALLS WITHIN THE MINIMUM RESTRAINED LENGTH, MEASURED FROM THE CENTER OF THE FITTING, AS SHOWN ON THE FITTING, SHALL BE RESTRAINED, AND SHALL WITHSTAND THE MAXIMUM TENSILE STRESS APPLIED TO THE FITTING.						51. THE ONCE OF THE WATER SYSTEM, EACH JOINT THAT FALLS WITHIN THE MINIMUM RESTRAINED LENGTH, MEASURED FROM THE CENTER OF THE FITTING, AS SHOWN ON THE FITTING, SHALL BE RESTRAINED, AND SHALL WITHSTAND THE MAXIMUM TENSILE STRESS APPLIED TO THE FITTING.						1/4 (40)						1/4 (40)									
52. CONTRACTOR SHALL ADJUST FOR OTHER CONDITIONS AND SUBMIT FOR APPROVAL.						52. CONTRACTOR SHALL ADJUST FOR OTHER CONDITIONS AND SUBMIT FOR APPROVAL.						1/4 (40)						1/4 (40)									
53. THE ONCE OF THE WATER SYSTEM, EACH JOINT THAT FALLS WITHIN THE MINIMUM RESTRAINED LENGTH, MEASURED FROM THE CENTER OF THE FITTING, AS SHOWN ON THE FITTING, SHALL BE RESTRAINED, AND SHALL WITHSTAND THE MAXIMUM TENSILE STRESS APPLIED TO THE FITTING.						53. THE ONCE OF THE WATER SYSTEM, EACH JOINT THAT FALLS WITHIN THE MINIMUM RESTRAINED LENGTH, MEASURED FROM THE CENTER OF THE FITTING, AS SHOWN ON THE FITTING, SHALL BE RESTRAINED, AND SHALL WITHSTAND THE MAXIMUM TENSILE STRESS APPLIED TO THE FITTING.						1/4 (40)						1/4 (40)									
54. CONTRACTOR SHALL ADJUST FOR OTHER CONDITIONS AND SUBMIT FOR APPROVAL.						54. CONTRACTOR SHALL ADJUST FOR OTHER CONDITIONS AND SUBMIT FOR APPROVAL.						1/4 (40)						1/4 (40)									
55. THE ONCE OF THE WATER SYSTEM, EACH JOINT THAT FALLS WITHIN THE MINIMUM RESTRAINED LENGTH, MEASURED FROM THE CENTER OF THE FITTING, AS SHOWN ON THE FITTING, SHALL BE RESTRAINED, AND SHALL WITHSTAND THE MAXIMUM TENSILE STRESS APPLIED TO THE FITTING.						55. THE ONCE OF THE WATER SYSTEM, EACH JOINT THAT FALLS WITHIN THE MINIMUM RESTRAINED LENGTH, MEASURED FROM THE CENTER OF THE FITTING, AS SHOWN ON THE FITTING, SHALL BE RESTRAINED, AND SHALL WITHSTAND THE MAXIMUM TENSILE STRESS APPLIED TO THE FITTING.						1/4 (40)						1/4 (40)									
56. CONTRACTOR SHALL ADJUST FOR OTHER CONDITIONS AND SUBMIT FOR APPROVAL.						56. CONTRACTOR SHALL ADJUST FOR OTHER CONDITIONS AND SUBMIT FOR APPROVAL.						1/4 (40)						1/4 (40)									
57. THE ONCE OF THE WATER SYSTEM, EACH JOINT THAT FALLS WITHIN THE MINIMUM RESTRAINED LENGTH, MEASURED FROM THE CENTER OF THE FITTING, AS SHOWN ON THE FITTING, SHALL BE RESTRAINED, AND SHALL WITHSTAND THE MAXIMUM TENSILE STRESS APPLIED TO THE FITTING.						57. THE ONCE OF THE WATER SYSTEM, EACH JOINT THAT FALLS WITHIN THE MINIMUM RESTRAINED LENGTH, MEASURED FROM THE CENTER OF THE FITTING, AS SHOWN ON THE FITTING, SHALL BE RESTRAINED, AND SHALL WITHSTAND THE MAXIMUM TENSILE STRESS APPLIED TO THE FITTING.						1/4 (40)						1/4 (40)									
58. CONTRACTOR SHALL ADJUST FOR OTHER CONDITIONS AND SUBMIT FOR APPROVAL.						58. CONTRACTOR SHALL ADJUST FOR OTHER CONDITIONS AND SUBMIT FOR APPROVAL.						1/4 (40)						1/4 (40)									
59. THE ONCE OF THE WATER SYSTEM, EACH JOINT THAT FALLS WITHIN THE MINIMUM RESTRAINED LENGTH, MEASURED FROM THE CENTER OF THE FITTING, AS SHOWN ON THE FITTING, SHALL BE RESTRAINED, AND SHALL WITHSTAND THE MAXIMUM TENSILE STRESS APPLIED TO THE FITTING.						59. THE ONCE OF THE WATER SYSTEM, EACH JOINT THAT FALLS WITHIN THE MINIMUM RESTRAINED LENGTH, MEASURED FROM THE CENTER OF THE FITTING, AS SHOWN ON THE FITTING, SHALL BE RESTRAINED, AND SHALL WITHSTAND THE MAXIMUM TENSILE STRESS APPLIED TO THE FITTING.						1/4 (40)						1/4 (40)									
60. CONTRACTOR SHALL ADJUST FOR OTHER CONDITIONS AND SUBMIT FOR APPROVAL.						60. CONTRACTOR SHALL ADJUST FOR OTHER CONDITIONS AND SUBMIT FOR APPROVAL.						1/4 (40)						1/4 (40)									
61. THE ONCE OF THE WATER SYSTEM, EACH JOINT THAT FALLS WITHIN THE MINIMUM RESTRAINED LENGTH, MEASURED FROM THE CENTER OF THE FITTING, AS SHOWN ON THE FITTING, SHALL BE RESTRAINED, AND SHALL WITHSTAND THE MAXIMUM TENSILE STRESS APPLIED TO THE FITTING.						61. THE ONCE OF THE WATER SYSTEM, EACH JOINT THAT FALLS WITHIN THE MINIMUM RESTRAINED LENGTH, MEASURED FROM THE CENTER OF THE FITTING, AS SHOWN ON THE FITTING, SHALL BE RESTRAINED, AND SHALL WITHSTAND THE MAXIMUM TENSILE STRESS APPLIED TO THE FITTING.						1/4 (40)						1/4 (40)									
62. CONTRACTOR SHALL ADJUST FOR OTHER CONDITIONS AND SUBMIT FOR APPROVAL.						62. CONTRACTOR SHALL ADJUST FOR OTHER CONDITIONS AND SUBMIT FOR APPROVAL.						1/4 (40)						1/4 (40)									
63. THE ONCE OF THE WATER SYSTEM, EACH JOINT THAT FALLS WITHIN THE MINIMUM RESTRAINED LENGTH, MEASURED FROM THE CENTER OF THE FITTING, AS SHOWN ON THE FITTING, SHALL BE RESTRAINED, AND SHALL WITHSTAND THE MAXIMUM TENSILE STRESS APPLIED TO THE FITTING.						63. THE ONCE OF THE WATER SYSTEM, EACH JOINT THAT FALLS WITHIN THE MINIMUM RESTRAINED LENGTH, MEASURED FROM THE CENTER OF THE FITTING, AS SHOWN ON THE FITTING, SHALL BE RESTRAINED, AND SHALL WITHSTAND THE MAXIMUM TENSILE STRESS APPLIED TO THE FITTING.						1/4 (40)						1/4 (40)									
64. CONTRACTOR SHALL ADJUST FOR OTHER CONDITIONS AND SUBMIT FOR APPROVAL.						64. CONTRACTOR SHALL ADJUST FOR OTHER CONDITIONS AND SUBMIT FOR APPROVAL.						1/4 (40)						1/4 (40)									
65. THE ONCE OF THE WATER SYSTEM, EACH JOINT THAT FALLS WITHIN THE MINIMUM RESTRAINED LENGTH, MEASURED FROM THE CENTER OF THE FITTING, AS SHOWN ON THE FITTING, SHALL BE RESTRAINED, AND SHALL WITHSTAND THE MAXIMUM TENSILE STRESS APPLIED TO THE FITTING.						65. THE ONCE OF THE WATER SYSTEM, EACH JOINT THAT FALLS WITHIN THE MINIMUM RESTRAINED LENGTH, MEASURED FROM THE CENTER OF THE FITTING, AS SHOWN ON THE FITTING, SHALL BE RESTRAINED, AND SHALL WITHSTAND THE MAXIMUM TENSILE STRESS APPLIED TO THE FITTING.						1/4 (40)						1/4 (40)									
66. CONTRACTOR SHALL ADJUST FOR OTHER CONDITIONS AND SUBMIT FOR APPROVAL.						66. CONTRACTOR SHALL ADJUST FOR OTHER CONDITIONS AND SUBMIT FOR APPROVAL.						1/4 (40)						1/4 (40)									
67. THE ONCE OF THE WATER SYSTEM, EACH JOINT THAT FALLS WITHIN THE MINIMUM RESTRAINED LENGTH, MEASURED FROM THE CENTER OF THE FITTING, AS SHOWN ON THE FITTING, SHALL BE RESTRAINED, AND SHALL WITHSTAND THE MAXIMUM TENSILE STRESS APPLIED TO THE FITTING.						67. THE ONCE OF THE WATER SYSTEM, EACH JOINT THAT FALLS WITHIN THE MINIMUM RESTRAINED LENGTH, MEASURED FROM THE CENTER OF THE FITTING, AS SHOWN ON THE FITTING, SHALL BE RESTRAINED, AND SHALL WITHSTAND THE MAXIMUM TENSILE STRESS APPLIED TO THE FITTING.						1/4 (40)						1/4 (40)									
68. CONTRACTOR SHALL ADJUST FOR OTHER CONDITIONS AND SUBMIT FOR APPROVAL.						68. CONTRACTOR SHALL ADJUST FOR OTHER CONDITIONS AND SUBMIT FOR APPROVAL.						1/4 (40)						1/4 (40)									
69. THE ONCE OF THE WATER SYSTEM, EACH JOINT THAT FALLS WITHIN THE MINIMUM RESTRAINED LENGTH, MEASURED FROM THE CENTER OF THE FITTING, AS SHOWN ON THE FITTING, SHALL BE RESTRAINED, AND SHALL WITHSTAND THE MAXIMUM TENSILE STRESS APPLIED TO THE FITTING.						69. THE ONCE OF THE WATER SYSTEM, EACH JOINT THAT FALLS WITHIN THE MINIMUM RESTRAINED LENGTH, MEASURED FROM THE CENTER OF THE FITTING, AS SHOWN ON THE FITTING, SHALL BE RESTRAINED, AND SHALL WITHSTAND THE MAXIMUM TENSILE STRESS APPLIED TO THE FITTING.						1/4 (40)						1/4 (40)									
70. CONTRACTOR SHALL ADJUST FOR OTHER CONDITIONS AND SUBMIT FOR APPROVAL.						70. CONTRACTOR SHALL ADJUST FOR OTHER CONDITIONS AND SUBMIT FOR APPROVAL.						1/4 (40)						1/4 (40)									
71. THE ONCE OF THE WATER SYSTEM, EACH JOINT THAT FALLS WITHIN THE MINIMUM RESTRAINED LENGTH, MEASURED FROM THE CENTER OF THE FITTING, AS SHOWN ON THE FITTING, SHALL BE RESTRAINED, AND SHALL WITHSTAND THE MAXIMUM TENSILE STRESS APPLIED TO THE FITTING.						71. THE ONCE OF THE WATER SYSTEM, EACH JOINT THAT FALLS WITHIN THE MINIMUM RESTRAINED LENGTH, MEASURED FROM THE CENTER OF THE FITTING, AS SHOWN ON THE FITTING, SHALL BE RESTRAINED, AND SHALL WITHSTAND THE MAXIMUM TENSILE STRESS APPLIED TO THE FITTING.						1/4 (40)						1/4 (40)									
72. CONTRACTOR SHALL ADJUST FOR OTHER CONDITIONS AND SUBMIT FOR APPROVAL.						72. CONTRACTOR SHALL ADJUST FOR OTHER CONDITIONS AND SUBMIT FOR APPROVAL.						1/4 (40)						1/4 (40)									
73. THE ONCE OF THE WATER SYSTEM, EACH JOINT THAT FALLS WITHIN THE MINIMUM RESTRAINED LENGTH, MEASURED FROM THE CENTER OF THE FITTING, AS SHOWN ON THE FITTING, SHALL BE RESTRAINED, AND SHALL WITHSTAND THE MAXIMUM TENSILE STRESS APPLIED TO THE FITTING.						73. THE ONCE OF THE WATER SYSTEM, EACH JOINT THAT FALLS WITHIN THE MINIMUM RESTRAINED LENGTH, MEASURED FROM THE CENTER OF THE FITTING, AS SHOWN ON THE FITTING, SHALL BE RESTRAINED, AND SHALL WITHSTAND THE MAXIMUM TENSILE STRESS APPLIED TO THE FITTING.						1/4 (40)						1/4 (40)									
74. CONTRACTOR SHALL ADJUST FOR OTHER CONDITIONS AND SUBMIT FOR APPROVAL.						74. CONTRACTOR SHALL ADJUST FOR OTHER CONDITIONS AND SUBMIT FOR APPROVAL.						1/4 (40)						1/4 (40)									
75. THE ONCE OF THE WATER SYSTEM, EACH JOINT THAT FALLS WITHIN THE MINIMUM RESTRAINED LENGTH, MEASURED FROM THE CENTER OF THE FITTING, AS SHOWN ON THE FITTING, SHALL BE RESTRAINED, AND SHALL WITHSTAND THE MAXIMUM TENSILE STRESS APPLIED TO THE FITTING.						75. THE ONCE OF THE WATER SYSTEM, EACH JOINT THAT FALLS WITHIN THE MINIMUM RESTRAINED LENGTH, MEASURED FROM THE CENTER OF THE FITTING, AS SHOWN ON THE FITTING, SHALL BE RESTRAINED, AND SHALL WITHSTAND THE MAXIMUM TENSILE STRESS APPLIED TO THE FITTING.						1/4 (40)						1/4 (40)									
76. CONTRACTOR SHALL ADJUST FOR OTHER CONDITIONS AND SUBMIT FOR APPROVAL.						76. CONTRACTOR SHALL ADJUST FOR OTHER CONDITIONS AND SUBMIT FOR APPROVAL.						1/4 (40)						1/4 (40)									
77. THE ONCE OF THE WATER SYSTEM, EACH JOINT THAT FALLS WITHIN THE MINIMUM RESTRAINED LENGTH, MEASURED FROM THE CENTER OF THE FITTING, AS SHOWN ON THE FITTING, SHALL BE RESTRAINED, AND SHALL WITHSTAND THE MAXIMUM TENSILE STRESS APPLIED TO THE FITTING.						77. THE ONCE OF THE WATER SYSTEM, EACH JOINT THAT FALLS WITHIN THE MINIMUM RESTRAINED LENGTH, MEASURED FROM THE CENTER OF THE FITTING, AS SHOWN ON THE FITTING, SHALL BE RESTRAINED, AND SHALL WITHSTAND THE MAXIMUM TENSILE STRESS APPLIED TO THE FITTING.						1/4 (40)						1/4 (40)									
78. CONTRACTOR SHALL ADJUST FOR OTHER CONDITIONS AND SUBMIT FOR APPROVAL.						78. CONTRACTOR SHALL ADJUST FOR OTHER CONDITIONS AND SUBMIT FOR APPROVAL.						1/4 (40)						1/4 (40)									
79. THE ONCE OF THE WATER SYSTEM, EACH JOINT THAT FALLS WITHIN THE MINIMUM RESTRAINED LENGTH, MEASURED FROM THE CENTER OF THE FITTING, AS SHOWN ON THE FITTING, SHALL BE RESTRAINED, AND SHALL WITHSTAND THE MAXIMUM TENSILE STRESS APPLIED TO THE FITTING.						79. THE ONCE OF THE WATER SYSTEM, EACH JOINT THAT FALLS WITHIN THE MINIMUM RESTRAINED LENGTH, MEASURED FROM THE CENTER OF THE FITTING, AS SHOWN ON THE FITTING, SHALL BE RESTRAINED, AND SHALL WITHSTAND THE MAXIMUM TENSILE STRESS APPLIED TO THE FITTING.						1/4 (40)						1/4 (40)									
80. CONTRACTOR SHALL ADJUST FOR OTHER CONDITIONS AND SUBMIT FOR APPROVAL.						80. CONTRACTOR SHALL ADJUST FOR OTHER CONDITIONS AND SUBMIT FOR APPROVAL.						1/4 (40)						1/4 (40)									
81. THE ONCE OF THE WATER SYSTEM, EACH JOINT THAT FALLS WITHIN THE MINIMUM RESTRAINED LENGTH, MEASURED FROM THE CENTER OF THE FITTING, AS SHOWN ON THE FITTING, SHALL BE RESTRAINED, AND SHALL WITHSTAND THE MAXIMUM TENSILE STRESS APPLIED TO THE FITTING.						81. THE ONCE OF THE WATER SYSTEM, EACH JOINT THAT FALLS WITHIN THE MINIMUM RESTRAINED LENGTH, MEASURED FROM THE CENTER OF THE FITTING, AS SHOWN ON THE FITTING, SHALL BE RESTRAINED, AND SHALL WITHSTAND THE MAXIMUM TENSILE STRESS APPLIED TO THE FITTING.						1/4 (40)						1/4 (40)									
82. CONTRACTOR SHALL ADJUST FOR OTHER CONDITIONS AND SUBMIT FOR APPROVAL.						82. CONTRACTOR SHALL ADJUST FOR OTHER CONDITIONS AND SUBMIT FOR APPROVAL.						1/4 (40)						1/4 (40)									
83. THE ONCE OF THE WATER SYSTEM, EACH JOINT THAT FALLS WITHIN THE MINIMUM RESTRAINED LENGTH, MEASURED FROM THE CENTER OF THE FITTING, AS SHOWN ON THE FITTING, SHALL BE RESTRAINED, AND SHALL WITHSTAND THE MAXIMUM TENSILE STRESS APPLIED TO THE FITTING.						83. THE ONCE OF THE WATER SYSTEM, EACH JOINT THAT FALLS WITHIN THE MINIMUM RESTRAINED LENGTH, MEASURED FROM THE CENTER OF THE FITTING, AS SHOWN ON THE FITTING, SHALL BE RESTRAINED, AND SHALL WITHSTAND THE MAXIMUM TENSILE STRESS APPLIED TO THE FITTING.						1/4 (40)						1/4 (40)									
84. CONTRACTOR SHALL ADJUST FOR OTHER CONDITIONS AND SUBMIT FOR APPROVAL.						84. CONTRACTOR SHALL ADJUST FOR OTHER CONDITIONS AND SUBMIT FOR APPROVAL.						1/4 (40)						1/4 (40)									
85. THE ONCE OF THE WATER SYSTEM, EACH JOINT THAT FALLS WITHIN THE MINIMUM RESTRAINED LENGTH, MEASURED FROM THE CENTER OF THE FITTING, AS SHOWN ON THE FITTING, SHALL BE RESTRAINED, AND SHALL WITHSTAND THE MAXIMUM TENSILE STRESS APPLIED TO THE FITTING.						85. THE ONCE OF THE WATER SYSTEM, EACH JOINT THAT FALLS WITHIN THE MINIMUM RESTRAINED LENGTH, MEASURED FROM THE CENTER OF THE FITTING, AS SHOWN ON THE FITTING, SHALL BE RESTRAINED, AND SHALL WITHSTAND THE MAXIMUM TENSILE STRESS APPLIED TO THE FITTING.						1/4 (40)						1/4 (40)									
86. CONTRACTOR SHALL ADJUST FOR OTHER CONDITIONS AND SUBMIT FOR APPROVAL.						86. CONTRACTOR SHALL ADJUST FOR OTHER CONDITIONS AND SUBMIT FOR APPROVAL.																					

- NOTES:
1. ALL CONCRETE TO BE CLASS A (4000 PSI).
 2. ALL DIMENSIONS ARE MINIMUMS. ALL ANCHOR AND THRUST BLOCKS SHALL BEAR ON UNDISTURBED EARTH.
 3. IN ALL CASES SHOWN, MEASUREMENT "D" REFERS TO THE INSIDE PIPE DIAMETER.
 4. ANCHOR AND THRUST BLOCK DIMENSIONS SHOWN ARE MINIMUM FOR 100 PSI. WATER PRESSURE AND SOIL RESISTANCE OF 2 KIPS PER SQ. FT. CONTRACTOR SHALL ADJUST FOR OTHER CONDITIONS AND SUBMIT FOR APPROVAL.
 5. IF THE OWNER OF THE WATER SYSTEM REQUIRES A METHOD THAT RESTRAINS INDIVIDUAL JOINTS, EACH JOINT THAT FALLS WITHIN THE MINIMUM RESTRAINED LENGTH MEASURED FROM THE CENTER OF THE FITTING, AS SHOWN ON THESE SHEETS SHALL BE RESTRAINED, AND SHALL WITHSTAND THE MAXIMUM PRESSURE APPLIED TO THE SYSTEM.
 6. CLASS A CONCRETE SHALL NOT BE PLACED UNDER WATER. THE CONTRACTOR SHALL DEMONSTRATE THE EXCAVATION OR PLACE TYPE C CONCRETE USING APPROPRIATE UNDERWATER PLACEMENT TECHNIQUES.
 7. CONCRETE FOR THRUST BLOCKS SHALL NOT BE ALLOWED TO COVER OR INTERFERE WITH JOINT OR RESTRAINT HARDWARE. PLASTIC SHEETING OR BUILDING FELT MAY BE PLACED OVER PIPE OR FITTINGS TO PREVENT CONCRETE FROM ADHERING TO SURFACES.
 8. FOR BENDS, BEARING AREA SHALL BE PARALLEL TO THE EDGE OF THE FITTING AT THE FITTING MIDPOINT.
 9. FOR TEES, BEARING AREA SHALL BE PERPENDICULAR TO THE BRANCH (SINGLE LEG) AXIS.
 10. FOR REDUCERS, BEARING AREA SHALL BE PERPENDICULAR TO THE FITTING AXIS. THE MINIMUM THICKNESS ALONG THE FITTING AXIS SHALL BE 1'-0" OR THE LENGTH BETWEEN THE BELLS, WHICHEVER IS SMALLER.
 11. THRUST RESTRAINTS FOR SIZES OR FITTINGS NOT SHOWN ON THESE SHEETS WILL BE DESIGNED ON A CASE BY CASE BASIS, AND WILL BE SHOWN IN THE CONTRACT DOCUMENTS.

WOOD GUIDE RAIL

56

SEDIMENT TRAP INFORMATION							
TRAP NUMBER	TRAP TYPE	DRAINAGE AREA (ACRES)	STORAGE REQUIRED (CU. YD.)	STORAGE PROVIDED (CU. YD.)	OUTLET LENGTH (FEET)	DEPTH BELOW OUTLET OR CLEANOUT ELEVATION (FEET)	EMBANKMENT HEIGHT AND ELEVATION
1.	PIPE OUTLET	3.17	11,412	13,808	24" DIA. RISER, 27" DIA. BARREL	2.5	166.50 4', 168.00
2.	PIPE OUTLET	1.46	5,256	5,325	18" DIA. RISER, 15" DIA. BARREL	2.5	210.50 4', 212.00

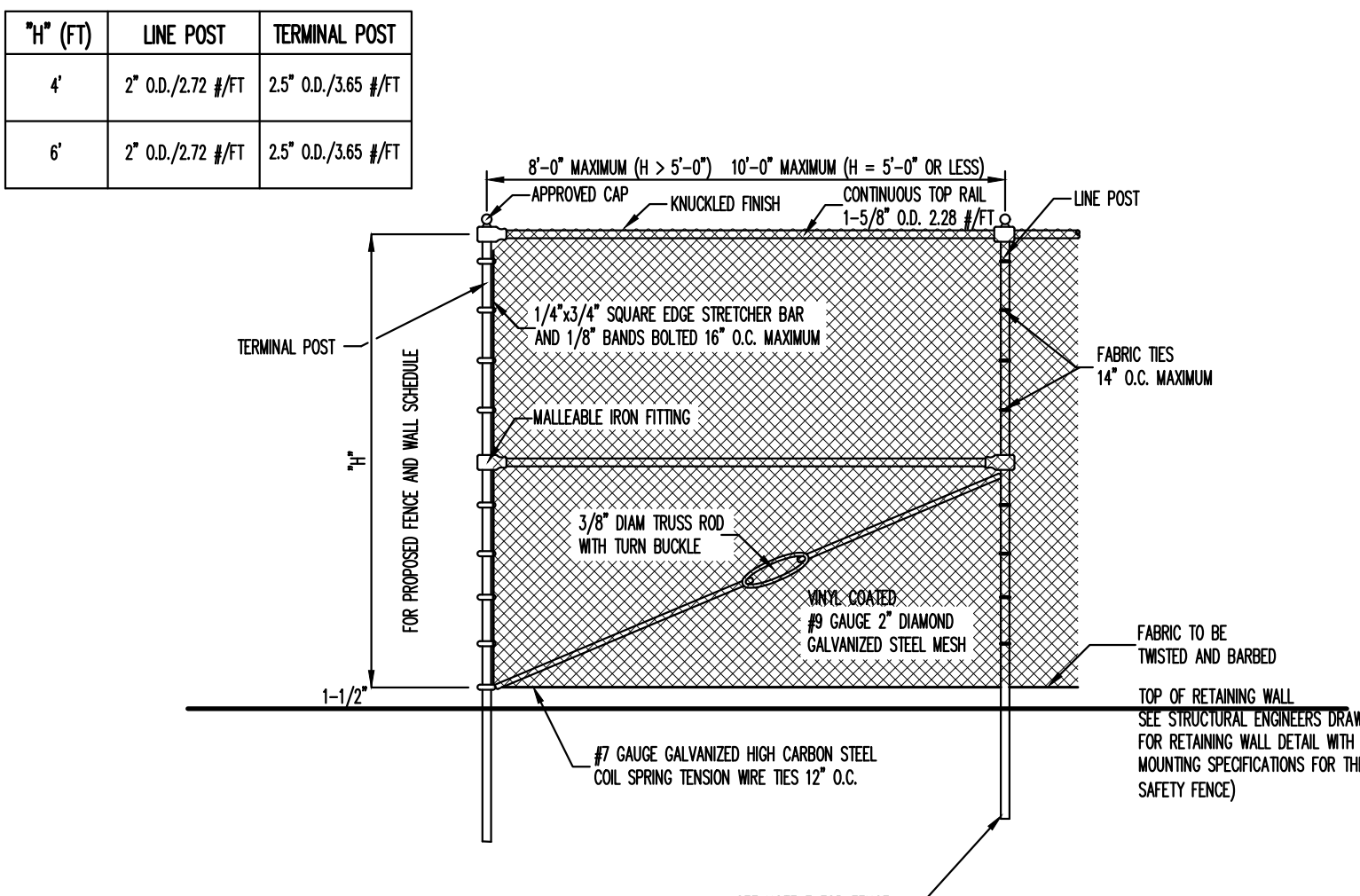


EMBANKMENT SECTION THRU RISER

- NOTE:
1. MAXIMUM DRAINAGE AREA 5 ACRES.
 2. W = DIAMETER OF RISER + 24"
 3. FOR THE RISER DIAMETER 15" & 18" THE NUMBER OF ORIF. BY ROW WILL BE 8 AND RISER DIAMETER 21", 24" & 27" WILL BE 12.
 4. REFER TO "PHASE 1 PLAN AND PHASE 2 PLAN" FOR SPECIFIC INFORMATION ON EACH SEDIMENT TRAP.

ROCK OUTLET PROTECTION (MINIMUM TAILWATER CONDITIONS)

57



- NOTES:
1. ALL POSTS, RAILS, FABRIC AND ACCESSORIES SHALL BE VINYL COATED. COLOR OF VINYL COATING SHALL BE BLACK.
 2. POST AND RAILS SHALL BE STANDARD FULL WEIGHT VINYL COATED GALVANIZED SCHEDULE 40 PIPE MANUFACTURED AND GALVANIZED IN ACCORDANCE WITH ASTM A-120. ALL MATERIALS SHALL BE NEW AND FIRST CLASS AND SHALL NOT INCLUDE RECONDITIONED OR REROLLED PIPE.
 3. FITTINGS SHALL BE VINYL COATED WALLEABLE ROLL FITTINGS CONFORMING TO THE REQUIREMENTS OF ASTM A-47 GALVANIZED IN ACCORDANCE WITH ASTM A-153.
 4. FABRIC SHALL BE 9 GAUGE GALVANIZED 2" MESH, WHICH SHALL BE VINYL CLAD IN CONFORMANCE WITH THE REQUIREMENTS OF AASHTO M-181, TYPE III. VINYL COATING SHALL BE FIRMLY AND CONTINUOUSLY EXTRUSION BONDED TO THE GALVANIZED STEEL WIRE. TOP SURFACE SHALL HAVE KNUCKLED FINISH.
 5. TENSION WIRE SHALL BE VINYL COATED 7 GAUGE MEETING THE REQUIREMENTS OF ASTM A-641 AS MODIFIED HEREIN. THE TENSILE STRENGTH SHALL BE AT LEAST 80,000 PSI WITH A GALVANIZED COATING OF NOT LESS THAN 0.7 OZ. PER SQUARE FOOT.
 6. FABRIC TIES SHALL BE MINIMUM 9 GAUGE VINYL COATED GALVANIZED STEEL OR ALUMINUM. MINIMUM SPACING SHALL BE AS FOLLOWS:
A. 14" O.C. AT LINE POSTS
B. 24" O.C. AT TOP RAIL
C. 12" O.C. AT TENSION WIRE
 7. WHERE CHAIN LINK FENCE IS TO BE INSTALLED ON WALLS, THE FENCE POSTS SHALL BE IMBEDDED A MINIMUM OF TWELVE (12) INCHES IN THE WALL. NEWLY CONSTRUCTED WALLS SHALL BE PROVIDED WITH PROPER SIZE SLEEVES TO ACCOMMODATE FENCE POSTS. FENCE POSTS SHALL BE SECURELY GROUTED IN PLACE USING AN APPROVED HIGH STRENGTH, NON-SHRINKING, NON-STAINING GROUT.
 8. THE CONTRACTOR WILL BE REQUIRED TO SUBMIT SHOP AND ERECTION DRAWINGS INDICATING MATERIALS, SIZES AND DIMENSIONS OF FENCING TO THE OWNER'S FIELD REPRESENTATIVE PRIOR TO ORDERING MATERIALS FOR HIS REVIEW AND APPROVAL.
 9. PRIOR TO INSTALLATION OF THE FENCE, THE CONTRACTOR SHALL CHECK THE FENCE LAYOUT WITH THE OWNER'S FIELD REPRESENTATIVE WHO MUST APPROVE THE LAYOUT BEFORE ANY OF THE WORK IS TO BE DONE.

ANCHOR AND THRUST BLOCKS

58

PIPE OUTLET SEDIMENT TRAP

59

CHAIN LINK FENCE (BLACK VINYL COATED)

60

APPLICANT/OWNER
CELEBRITY WESTCHESTER REALTY, LLC
5 ANDERSON LANE
GOLDENS BRIDGE, NY 10526

ARCHITECT
SULLIVAN ARCHITECTURE
31 MAMARONECK AVENUE
WHITE PLAINS, NY 10601

JMC Planning, Engineering, Landscape
Architecture & Land Surveying, PLLC
JMC Site Development Consultants, Inc.
John Meyer Consulting, Inc.
120 BEDFORD ROAD • ARBONK, NY 10504
voice 914.273.9225 • fax 914.273.2102
www.jmcpllc.com

CONSTRUCTION DETAILS
MERCEDES BENZ OF GOLDENS BRIDGE
NYS ROUTE 22
TOWN OF LEWISBORO, NY

ANY ALTERATION OF PLANS,
SPECIFICATIONS, PLATS AND
REPORTS BEARING THE SEAL
OF A LICENSED PROFESSIONAL
ENGINEER OR LICENSED LAND
SURVEYOR IS A VIOLATION OF THE NEW
YORK STATE EDUCATION LAW,
EXCEPT AS PROVIDED FOR BY
SECTION 7209 OF THE NEW

Drawn: SS Approved: AN
Scale: NOT TO SCALE
Date: 05/01/2024
Project No: 16124
NYS-DEMS C-908
Drawing No:

C-908